

pryme



Professional Services

It's all about people and time

Allocating the appropriate personnel with the necessary qualifications to meet your customer commitments is only possible with **comprehensive insight**.

Missing to capture time means missing to invoice it. Clients may be less likely to pay with poor descriptions. **Delayed timesheet submission** can negatively impact your cash flow and reporting.

Time is thus the DNA of your business. However, it often represents a **mental burden**. For that reason, employees need an easy and pleasant time entry process.

Invoicing should be easy, but the number of entries as well as the need to satisfy both the invoicing model and the agreed specifications, can make it challenging.



Resource planning is crucial.



Time is the essence of the revenue stream.



Invoicing is a time-consuming process.



www.prymeglobal.com

Professional Services



It's all about people and time



Fed up with spending too much time to set up a project?

- With a user-friendly step-by-step guide, you are enabled a quick and consistent setup in a less than a minute. Ensure high quality data by using pre-defined templates.
- Creating a project can be time-consuming because of the many things that need to be considered: task structure, pricing, posting, invoicing set up, etc. Instead of involving the Finance team, allow anyone to create projects, as simple as ABC.
- Start managing your projects with the quote phase for full control over project backlog and forecast. Complete project life cycle from quote to closeout.



Frustrated by not having an accurate overview of the resources?

- Straightforward overview of both workload and availability for optimal resource utilisation. Get an insight to know which resources are unutilised to increase profitability.
- Secure the adequate resources needed for your projects. More successful projects boosts customer satisfaction.
- Only ONE resource planning: collaborative, up-to-date, with interactive drag & drop functionality, that reflects your weekly planning. Make time reporting as easy as possible by updating timesheets with work assignments. Send those to the daily-use Outlook calendar.
- Obtain real-time resource forecasts by integrating your resource management within your business application. Easier resource planning and allocation.



Professional Services

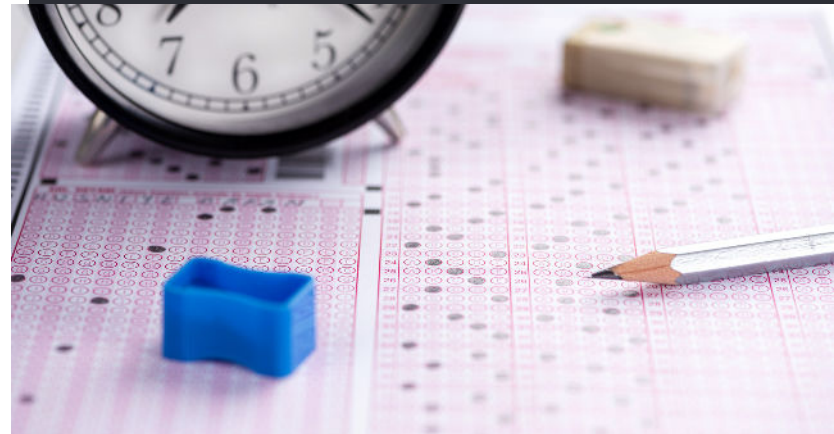


It's all about people and time



Why is it so difficult to get timesheets and expenses on time?

- Easy time capture when the work is done with automatically created time records. Whether working on long-term assignments, or on multiple short tasks in parallel, the easier the time is registered, the less time entries will be missed.
- Easily enter expenses by taking a photo of the receipt with your phone.
- Use the start/stop time tracker or update your timesheet in a click with booked assignments. Enter time directly in Outlook. Receive an email with the current timesheet status for quick and effortless review and submission. Spend your time on billable work.
- Create value-adding texts by using pre-defined descriptions and description rules for consistency and quality assurance.



Struggling with inaccurate and time-consuming invoicing?

- Transform your most inefficient process and free up resources for billable customer work. Fully integrated with the Finance Accounting.
- Reduce quality concerns caused by numerous Time & Material entries that require adjustment before billing.
- Effortlessly invoice at fixed price using a structured and user-friendly process, regardless of whether based on payment plans, milestones, or project progress.
- Professional invoices for an easy and on-time accounts payable. Use invoice layouts and specification templates to easily group, (sub)total, and specify following your customers' requirements.
- Calculate WIP and post it to GL in a click for a correct income statement. Detailed WIP report for full audit trail also available.



Professional Services



It's all about people and time



Do you lack business insights to take data-driven decisions?

- Working with data spread over different systems or even over bridging Excel sheets makes it very difficult to have an overall view. Full access to detailed and trustful data from ONE source allows you to identify risks, and take corrective measures if needed.
- Multiple on-demand drill-down data visualisation options for better analysis and reporting of your overall project and resource performance. Full business insights displayed on dashboards as you wish thanks to flexible Power BI reports.

Projects

- Profitability
- Forecast
- Budget comparisons

...

Resources

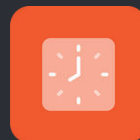
- Forecast
- Performance
- Timesheet status

...



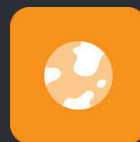
Advanced Projects simply PSA & ERP all-in-one

Advanced project and resource management & accounting on Business Central to develop conditions for growth and improved profitability.



pryme Time intelligent time tracking

It helps professional services companies enhance and simplify both time entry and resource forecast capabilities so that they can focus on billable work.



pryme Intercompany cross-company data exchange solution

It enables multiple business units and subsidiaries to collaborate and combine their resources to obtain valuable insights and improve decision-making.



[Explore the pryme apps](#)